



Workstation Specifications for Picis LYNX E/Code[®], E/Point[®], and C/Point[®]

E/Point and C/Point Workstations

Minimum	Recommended
<ul style="list-style-type: none"> • Intel® Pentium® III 750 MHz+ • Microsoft Windows 2000 Professional SP4 • Memory: 256 MB RAM • Available hard drive space: 500 MB • .NET Framework 2.0 sp1 or 3.5 • Microsoft Internet Explorer 6.0 • 15" Monitor • Mouse or other pointing device • 128 Kbps synchronous Internet speed or greater. 	<ul style="list-style-type: none"> • Intel® Core™ 2 Quad 2.66 GHz+ • Microsoft® Windows® XP SP3, Windows Vista® Windows Server® 2003 or 2008 • Memory: 4 GB RAM* • Available hard drive space: 1 GB • .NET Framework 2.0 sp1 or 3.5 • Microsoft Internet Explorer 7.0 • 19 " Monitor • Mouse or other pointing device • 640 Kbps synchronous Internet speed or greater.

* Maximum RAM may be constrained by the operating system

Delivering Results in Revenue Management™

Document Control #9920025009B

Copyright 2009, LYNX Medical Systems, Inc. All rights reserved.

LYNX Medical Systems, logo, E/Code, E/Map, E/Point, and C/Point are trademarks or registered trademarks of LYNX Medical Systems, Inc. Intel and Pentium are trademarks of Intel Corporation in the U.S. and other countries. Microsoft, Windows, Windows Server, Windows Vista, Silverlight, and Internet Explorer are either registered trademarks or trademarks of Microsoft Corporation in the United States and/or other countries. Adobe and Reader are either registered trademarks or trademarks of Adobe Systems Incorporated in the United States and/or other countries. Citrix is a trademark of Citrix Systems, Inc. and/or one or more of its subsidiaries, and may be registered in the United States Patent and Trademark Office and in other countries.



LYNX Hosted E/Code Workstations

Minimum	Recommended
<ul style="list-style-type: none"> • Intel® Pentium® III 750 MHz+ • Microsoft Windows 2000 Professional SP4 • Memory: 256 MB RAM • Available hard drive space:50 MB • Citrix® - ICA version 9.23 or later • 15" Monitor • Mouse or other pointing device • 128 Kbps synchronous Internet speed or greater. 	<ul style="list-style-type: none"> • Intel® Core™ 2 Quad 2.66 GHz+ • Microsoft® Windows® XP SP3, Windows Vista® Windows Server® 2003 or 2008 • Memory: 4 GB RAM* • Available hard drive space: 100 MB • Citrix® - ICA version 11.0 or later • 19 " Monitor • Mouse or other pointing device • 640 Kbps synchronous Internet speed or greater.

* Maximum RAM may be constrained by the operating system

Locally-Installed E/Code Workstations

Minimum	Recommended
<ul style="list-style-type: none"> • Intel® Pentium® III 750 MHz+ • Microsoft Windows 2000 Professional SP4 • Memory: 256 MB RAM • Available hard drive space:500 MB • .NET Framework 2.0 sp1 or 3.5 • Adobe Acrobat® Reader® 8.1.7 or later • Microsoft Internet Explorer 6 or later • 15" Monitor • Mouse or other pointing device • 100 Mbps network interface card (NIC) 	<ul style="list-style-type: none"> • Intel® Core™ 2 Quad 2.66 GHz+ • Microsoft® Windows® XP SP3, Windows Vista® Windows Server® 2003 or 2008 ** • Memory: 4 GB RAM* • Available hard drive space: 1 GB • .NET Framework 2.0 sp1 or 3.5 • Adobe Acrobat® Reader® 8.1.7 or later • Microsoft Internet Explorer 6 or later • 19 " Monitor • Mouse or other pointing device • 100 Mbps network interface card (NIC)

* Maximum RAM may be constrained by the operating system

** Data Execution Prevention (DEP) must be disabled for LYNX executables (see below)

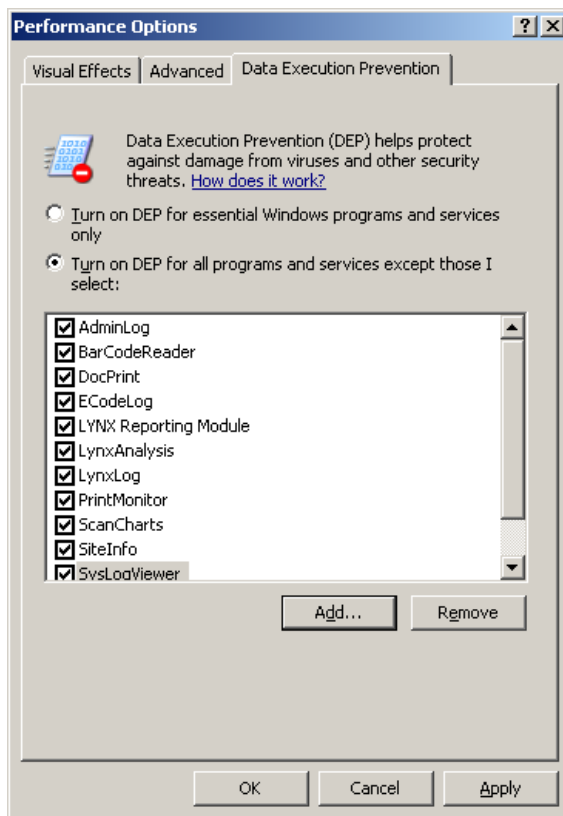
Note: The locally-installed client application can also be run in a Terminal Services or Citrix environment. Please consult with your LYNX Technical Project Manager if you have any questions.



Disable DEP

DEP must be disabled for all LYNX executable files (that is, all .exe files found in the [hard drive]\EMap\ folder). Use the following procedure to disable DEP for LYNX executable files.

1. On the workstation desktop, click **Start**, and then click **Control Panel**.
2. In the list of Control Panel programs, click **System**.
3. In the **System Properties** window, click the **Advanced** tab.
4. In the **Performance** area, click **Settings**.
5. In the **Performance Options** window, click the **Data Execution Prevention** tab.
6. Select the **Turn on DEP for all programs and services except those I select** option.
7. Click **Add**, and then navigate to the EMap folder on the hard drive (the default location is C:\EMap).
8. By default, only executable files are listed. Select an executable file and click **Open**. The file is added to the list on the **Data Execution Prevention** tab with a checkmark beside it.
9. Repeat steps 7 and 8 until all executable files are on the list and checkmarked.



10. In the **Data Execution Prevention** tab, click **OK**, and then click **OK** in the **System Properties** window.

If you have questions, please consult your LYNX Technical Project resource.



Scanners for Use with E/Map

Number of annual visits	Scanner specifications
12,000 or fewer	<ul style="list-style-type: none"> ▪ USB or SCSI interface ▪ TWAIN-compliant monochrome scanning ▪ 300 DPI or greater output resolution ▪ ADF (flatbed is optional) ▪ Simplex and duplex capability ▪ 15 to 30 PPM at 200 DPI and simplex
12,000 to 65,000	<ul style="list-style-type: none"> ▪ USB or SCSI interface ▪ TWAIN-compliant monochrome scanning ▪ 300 DPI or greater output resolution ▪ ADF (flatbed is optional) ▪ Simplex and duplex capability ▪ 30 to 50 PPM at 200 DPI and simplex
65,000 or more	<ul style="list-style-type: none"> ▪ USB or SCSI interface ▪ TWAIN-compliant monochrome scanning ▪ 300 DPI or greater output resolution ▪ ADF (flatbed is optional) ▪ Simplex and duplex capability ▪ 50 or more PPM at 200 DPI and simplex

A SCSI card and cable might be required (refer to your model specifications when you order). Some models include both items with the scanner purchase.

A service agreement should be maintained throughout the life of the scanner.

Representative examples of Fujitsu products that meet these specifications are available at <http://www.fcpa.com/support/scanners/>.

Printers

- HP LaserJet 4250 or higher (model to be determined based on facility annual census)
- 64 MB RAM (minimum)
- 100 Mbps NIC (unless connected locally)